



MONTHLY MEMBERSHIP PROGRESS REPORT

District 324A6

Results as of: 06/30/2018

GMT: N S SANKAR

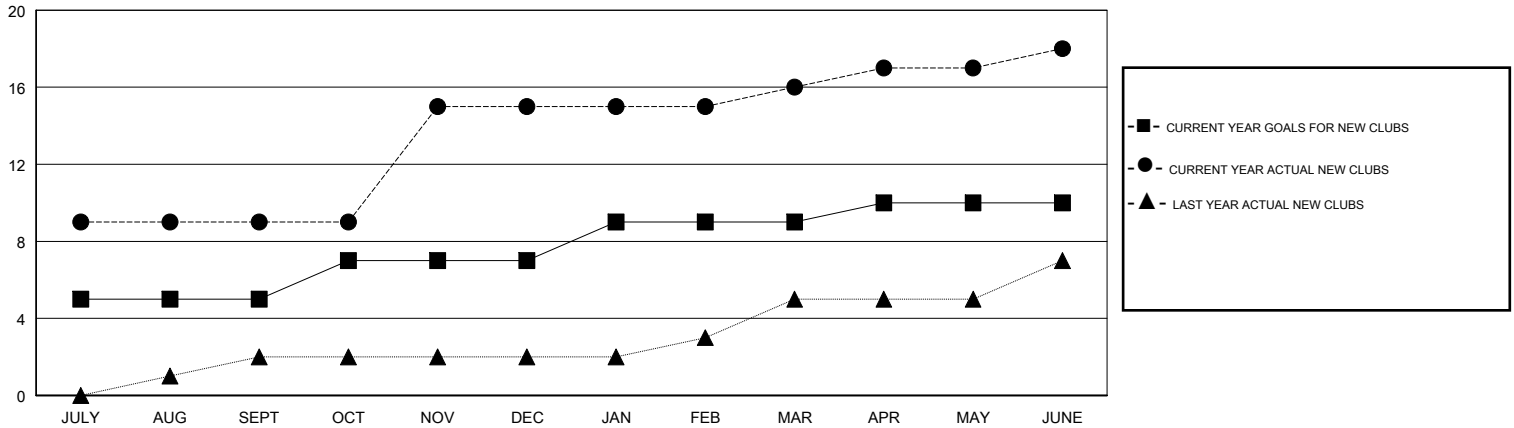
LOCATION INDIA

GMT CA

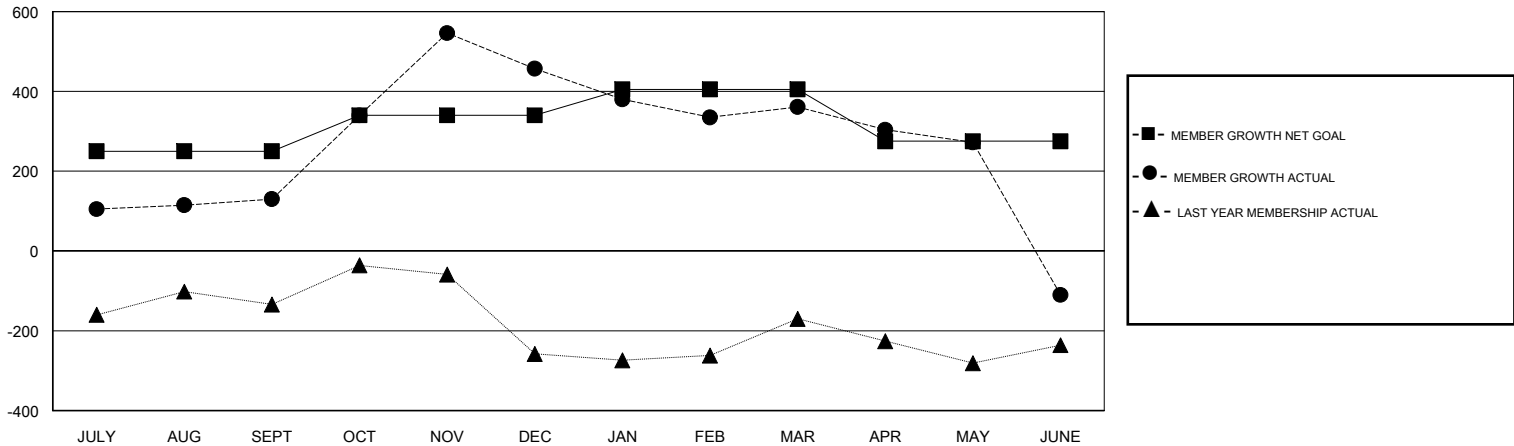
Clubs			
RESULTS FOR 2017-2018			
QUARTER	NEW CLUB GOAL	NEW CLUBS	DROPPED CLUBS
JULY/AUG/SEPT	5	9	1
OCT/NOV/DEC	2	6	1
JAN/FEB/MAR	2	1	4
APR/MAY/JUNE	1	2	9

Members			
RESULTS FOR 2017-2018			
QUARTER	MEMBER GROWTH NET GOAL	MEMBER GROWTH ACTUAL	DROPPED MEMBERS ACTUAL (including transfers)
JULY/AUG/SEPT	250	451	295
OCT/NOV/DEC	90	514	141
JAN/FEB/MAR	65	69	162
APR/MAY/JUNE	-130	310	755

GOALS AND ACTUAL NEW CLUBS CUMULATIVE



GOALS AND ACTUAL MEMBERS CUMULATIVE



DROPPED CLUBS: 15

120 CLUBS OF 141 ADDED 1 OR MORE NEW MEMBERS

GENDER DISTRIBUTION

MALE 3,310 (72.76%)
 FEMALE 1,239 (27.24%)
 Women Percentage Fiscal Year Goal: 2%

DROPPED MEMBERS

DECEASED	16
CLUB CANCELLED	350
OTHER	987
TOTAL	1,353

[CLICK HERE FOR CUMULATIVE MEMBERSHIP DATA](#)

TOTAL FAMILY UNIT MEMBERS	0
FAMILY MEMBERS PAYING HALF DUES	0